



Sonoma  
Water

# Beavers at Fryer Creek

STREAM MAINTENANCE PROGRAM



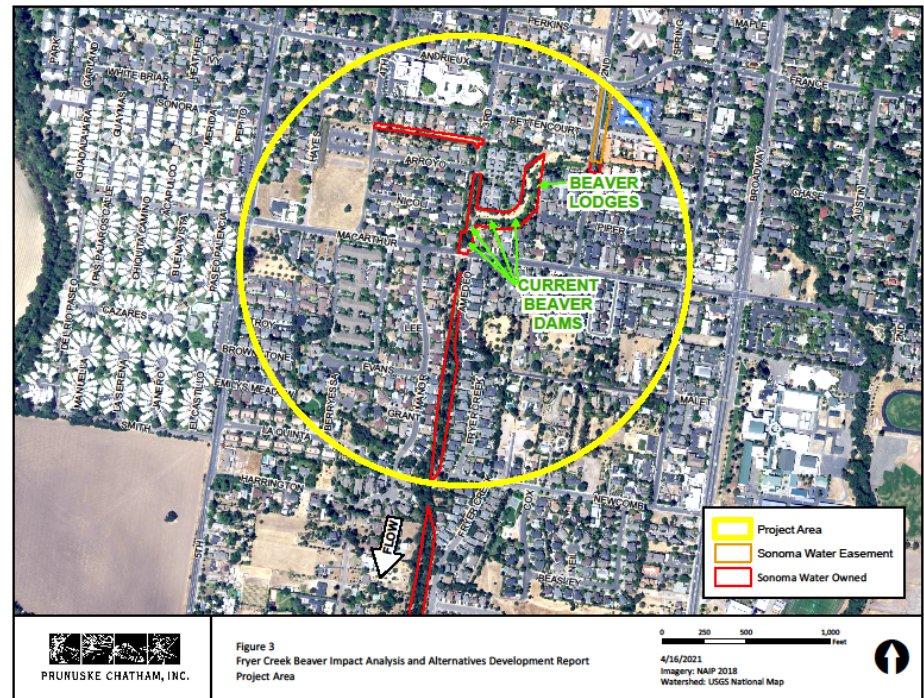
# American Beaver

- Native to California
- Nearly eradicated by late-1800s
- Construct dams to impound water
  - Protection from predators
  - Access food (willow, cattail, greens)



# Beaver Site

- Fryer Creek – above MacArthur Street
- East Fork - below Second Street



Sonoma  
Water

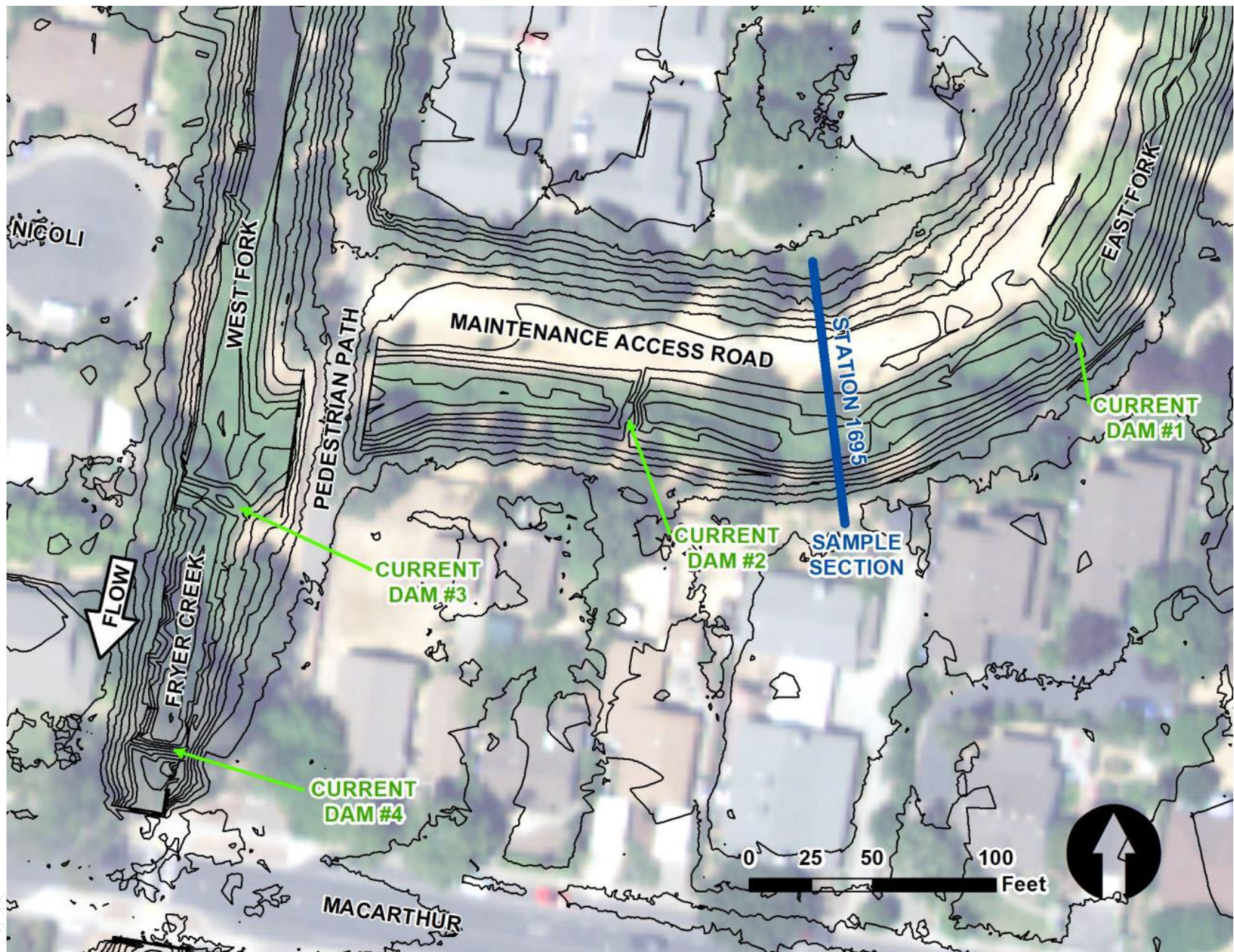


# Construction

- Since 2017
  - East Fork: 2 dams and lodge
  - Fryer Creek: 2 dams















02/14/2018 05:23 AM 42°F (

SPYPOINT LINK-DARK



Sonoma  
Water





Sonoma  
Water



# Public - Rain or Shine



01/16/2018 09:11 AM 39°F (

SPYPOINT LINK-DARK

# Stream Maintenance Program

- Manage flood risk along creeks
- Restore riparian habitats
- Enhance fish and wildlife habitat
- Beavers – balance habitat needs with flood protection



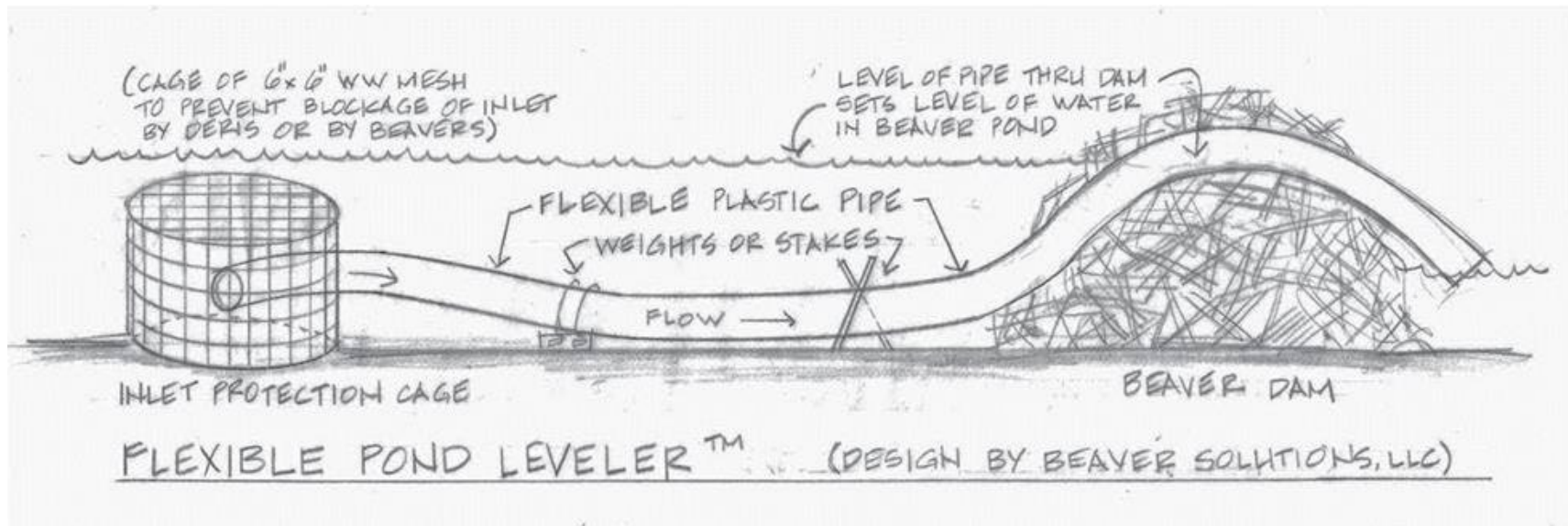


# Beaver Management

- Flood risk assessment
  - Prunuske Chatham Inc
- Beaver behavior and habitat requirements
  - Occidental Arts and Ecology
  - Swiftwater Designs

# Pond Management

- Pond Leveler
  - Maintain dam height and water level
  - Ensure dry access road





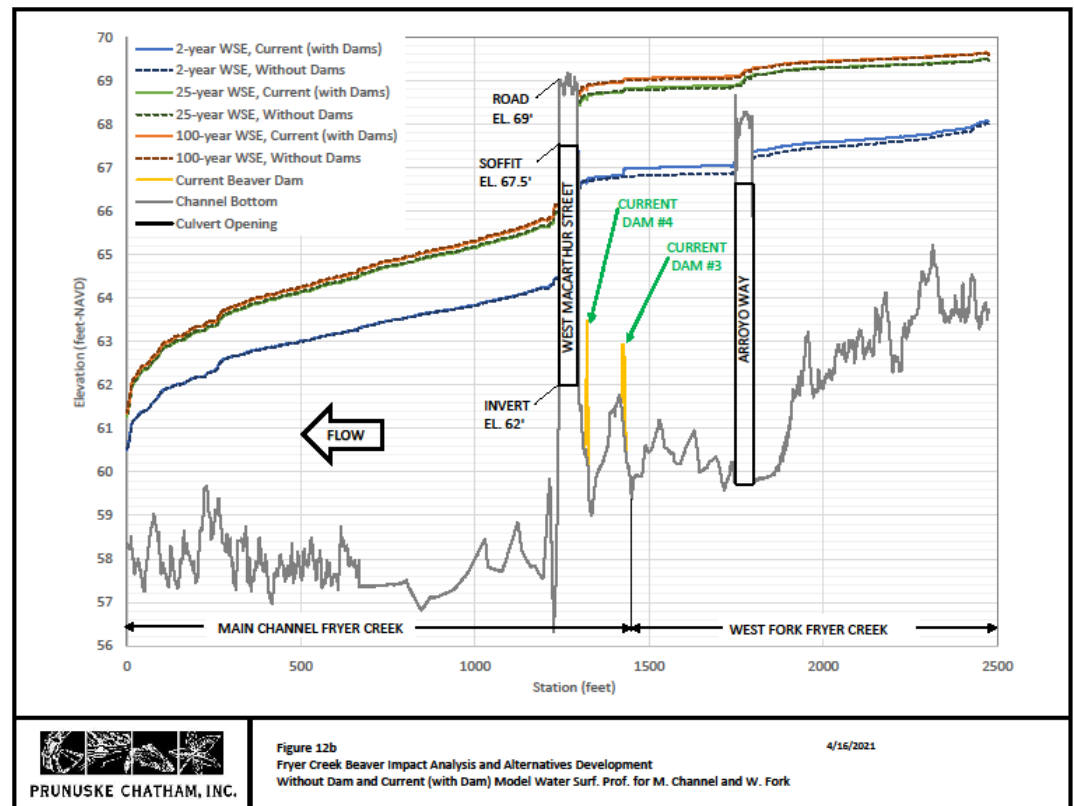
# Selected Tree Protection



Sonoma  
Water

# Hydrological Analysis

- Existing beaver dams have little effect on local flooding



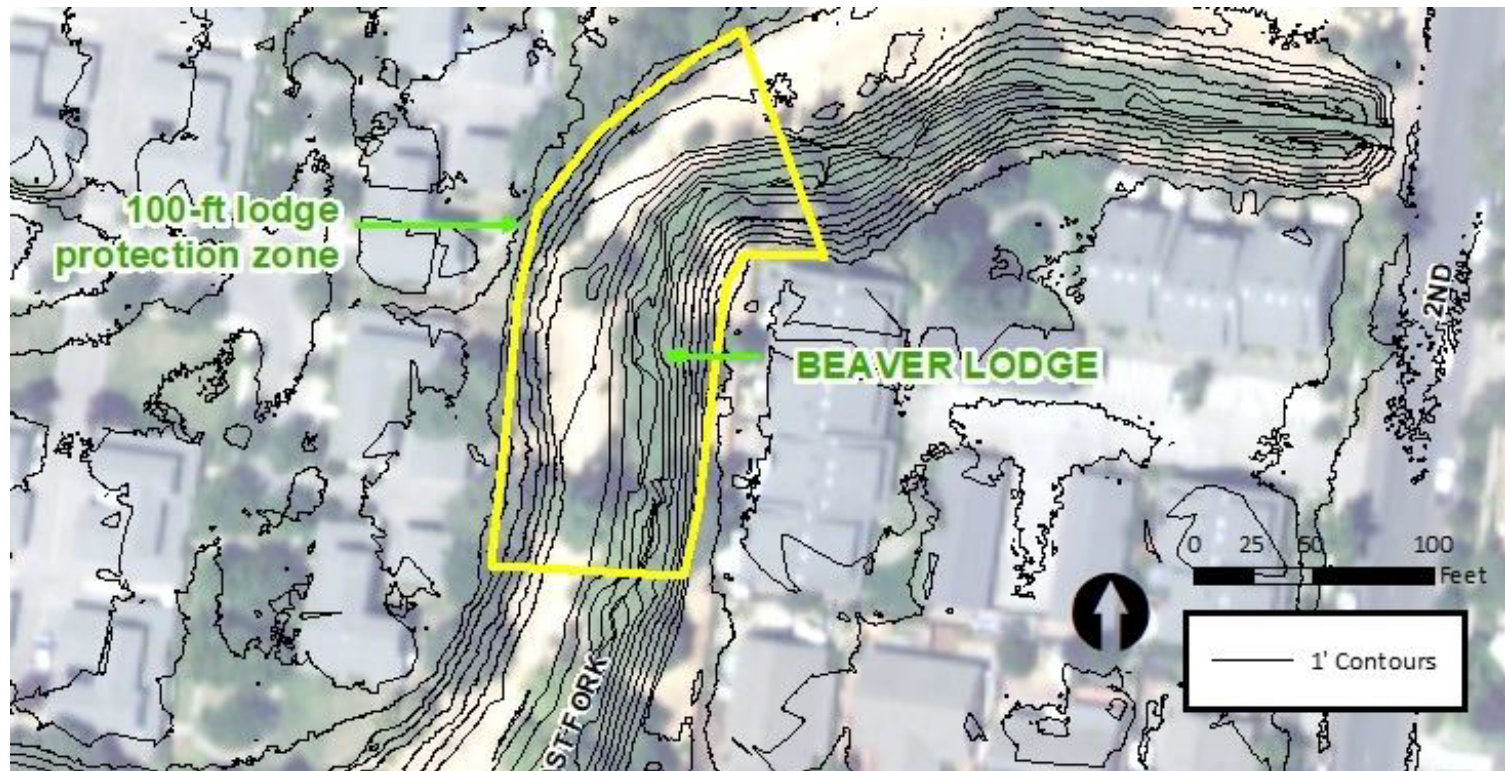


# Flood Factor

- Culvert at MacArthur St. has greatest affect from backwatering, which diminishes the influence of beaver dams



# Vegetation Maintenance



Sonoma  
Water







# Post-October Storm



Sonoma  
Water



